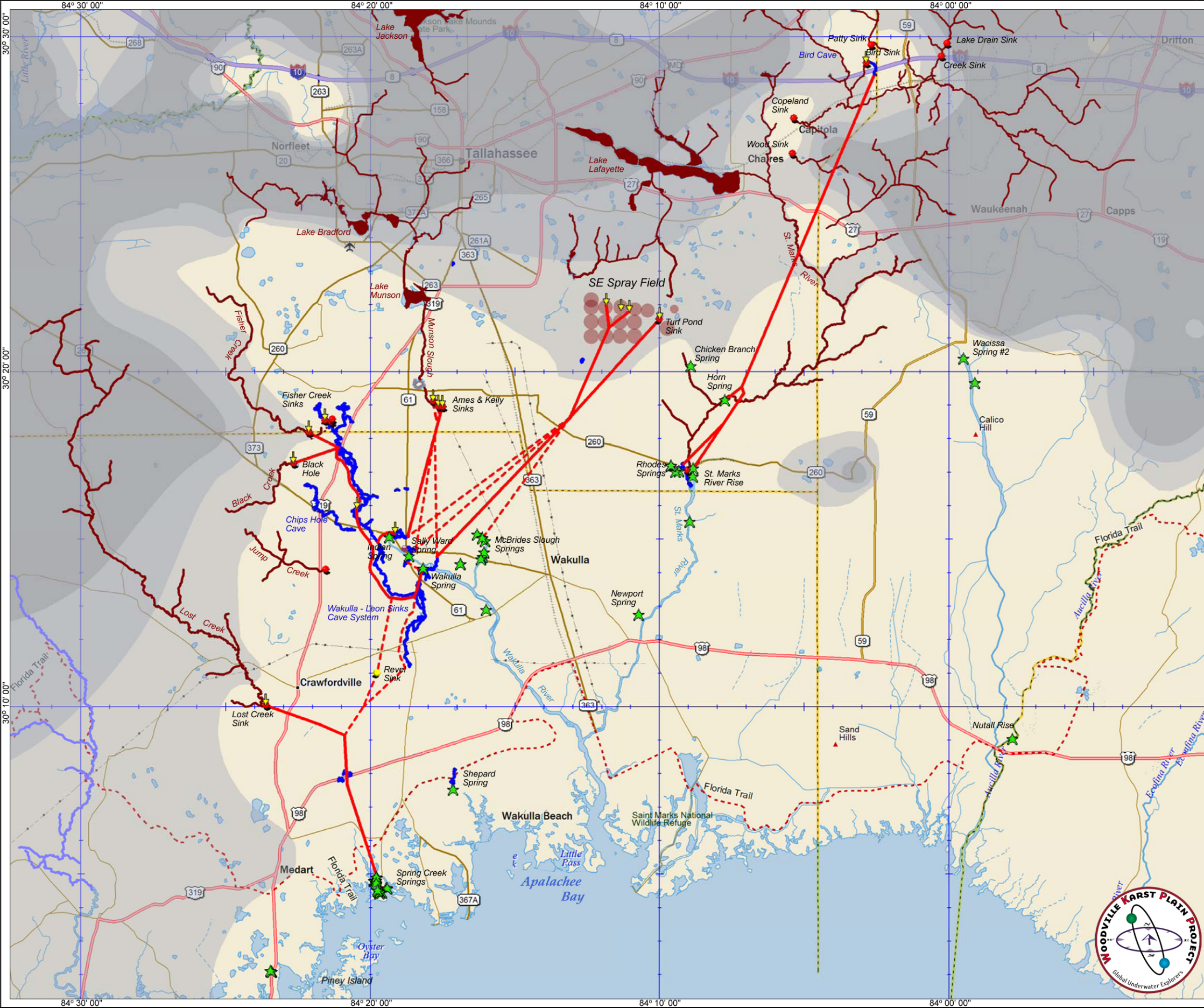


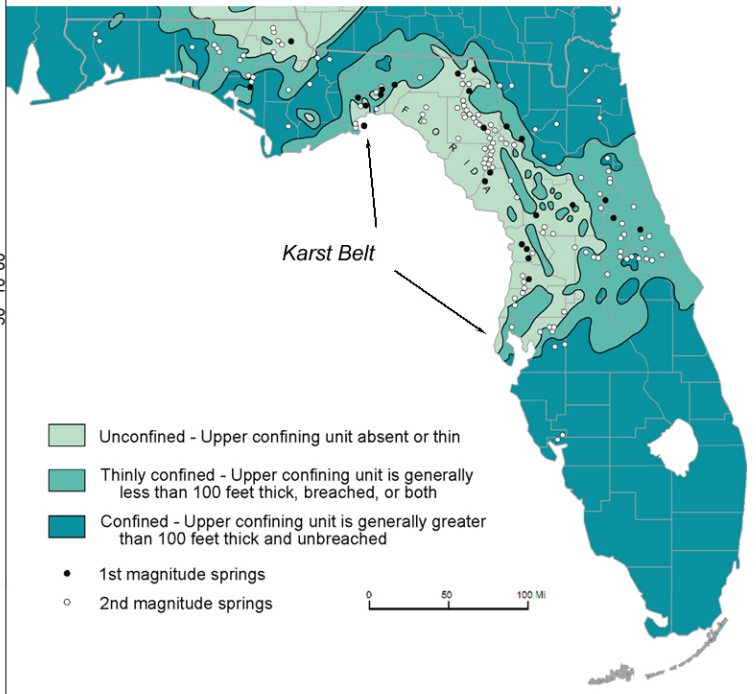
Woodville Karst Plain North Florida



Explanation

- swallet: sinkhole at terminus of a sinking stream
- ★ spring discharge
- ▼ location of tracer test injection
- poorly confined region: clay formations 0 - 25 feet thick
- moderately confined region: clay formations 25 - 50 feet thick
- more confined region: clay formations > 50 feet thick
- primary groundwater flow pathway defined by tracing
- - - secondary groundwater flow pathway defined by tracing
- mapped and surveyed underwater cave passage
- surface water drainage upstream of known swallet
- surface water drainage downstream of any known swallets

Florida's Karst Belt



- Unconfined - Upper confining unit absent or thin
- Thinly confined - Upper confining unit is generally less than 100 feet thick, breached, or both
- Confined - Upper confining unit is generally greater than 100 feet thick and unbreached
- 1st magnitude springs
- 2nd magnitude springs



Scale 1 : 225,000

1" = 3.55 mi Data Zoom 9-7

Created by: TRK

Last Modified: March 29, 2012

